

Lafayette Police Department

2012 Annual Report



City of Lafayette

24,865	Population
9.46 sq. miles	Size
206	Road Lane Miles
9,632	Households
2.54	Average Household Size

Schools

1	High School
1	Middle School
4	Elementary Schools
1	K-12 Charter School
1	6-12 Alternative School

2012 EOY Staffing and Years of Lafayette Police Service

1	Chief	28
2	Commanders	33
8	Sergeants	146
6	Corporals	76
4	Detectives	30
15	Patrol Officers	116
1	School Resource Officer	11
1	Animal Control Officer	7
1	Property/Evidence Specialist	9
1	Administrative Assistant	18
1	Records Supervisor	11
4	Records Technicians	44
.5	Crime Prevention Officer	2
45	Full Time Employees	529
1	Part Time Employee	2
5	Regular Volunteers	24

Lafayette Police Mission Statement: Service with Honor and Integrity

Lafayette Police Department Values

WE VALUE THE LAW

We protect the Constitutional Rights, apply the law fairly and consistently, and serve as examples to all.

WE VALUE THE PEOPLE WE SERVE AND EACH OTHER

We care about people and treat everyone with dignity and respect. We aid those who are endangered. We maintain a family oriented work atmosphere emphasizing humor and joy, and attained through fairness, career development, and the development of self-esteem in all of our team members. We respect diverse viewpoints without sacrificing professionalism in our service. We hold ourselves to the highest degree of integrity, never straying from the truth and always honest in thought and deed.

WE VALUE ORGANIZATIONAL EXCELLENCE

We desire to be the best; therefore we live our established values and hold ourselves to the highest standards. We are committed to training, established goals and written standards in order to focus on quality service for the community. We are proactive problem solvers, who are objective, fair and discreet in the delivery of those services. We continually examine our goals, ourselves and our results in order to continually improve our productivity in both effectiveness and efficiency. We are a positive policing force; analytical, flexible and innovative. We will become recognized leaders in service delivery, administrative ability and human concern. We take pride in our work and strive for professionalism in promoting public safety and order.

WE VALUE COMMUNICATION

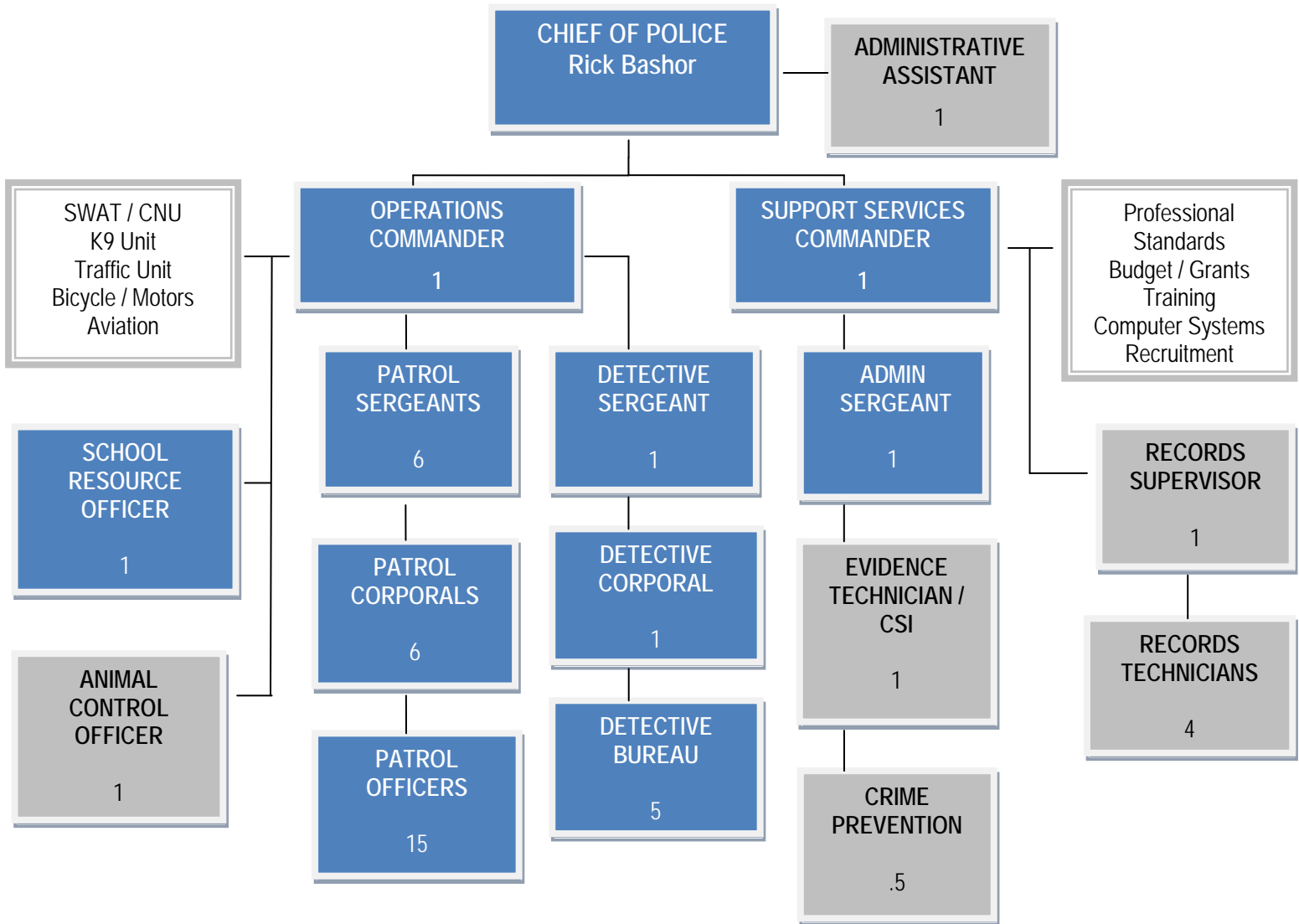
We work hard to educate our community about police procedures and the law. We keep lines of communication open within the department and community.

WE VALUE OUR PUBLIC IMAGE

We are community role models in integrity and performance by being visible, as well as caring, effective problem solvers. We hold sacred our community's confidence and trust and are inspired to maintain that honor.

WE ARE PROUD TO BE THE LAFAYETTE POLICE DEPARTMENT

Lafayette Police Department Organizational Chart by Authorized Positions



Retired K9s in 2012:
 Devo 2006-2012
 Orry 2007-2012

Crime Statistics

UCR Reported Part I Crimes

CRIME	2008	2009	2010	2011
Homicide	0	1	1	1
Rape	2	8	7	3
Robbery	6	10	4	6
Assault	204	210	185	213
Burglary	81	80	97	76
Theft	397	328	379	320
Auto Theft	24	20	9	17
Arson	10	4	6	7
TOTAL	724	661	688	643

Crime statistics for Lafayette have historically been compiled through the Uniform Crime Reporting Summary method prior to 2012. The number of offenses reported was arrived at based on hierarchy rules. Therefore, although multiple offenses may have occurred in a single incident, only the highest ranking offense was counted in these 8 major crime categories.

National Incident Based Reporting System

CRIME	2011	2012
Arson	8	5
Assault	218	272
Burglary	80	72
Destruction of Property (Vandalism)	311	245
Drug Offenses	315	299
Embezzlement	1	1
Fraud/Forgery	153	164
Homicide	1	0
Kidnapping/False Imprisonment	2	6
Larceny Theft	318	323
Motor Vehicle Theft	19	17
Pornography/Prostitution	6	5
Possession of Stolen Property	8	8
Robbery	6	11
Sex Offenses (Forcible & Non Forcible)	19	43
Weapons Violations	14	15
TOTAL	1479	1486

Beginning in 2012, Colorado required all law enforcement agencies to compile crime statistics through the National Incident Based Reporting System (NIBRS) method. This method was developed to improve quality of crime data collection. New classification procedures allow multiple-offense incidents to be reported, not just the hierarchy offense in each incident. Additionally in the NIBRS reporting method, data is collected in more crime categories than in Summary reporting and some offenses have new classification definitions. As jurisdictions switch from the Summary UCR system to NIBRS, you will see an increase in crime totals due to the new reporting method, updated crime definitions and the additional crime categories. Beginning 2012 forward, crime statistics will be reported by all Colorado law enforcement agencies using the more thorough NIBRS method. Lafayette ran 2011 crime statistics in both reporting methods to demonstrate the transition and provide comparison data for 2012.

Arrests

	2008	2009	2010	2011	2012
JUVENILES	324	352	299	299	205
ADULTS	994	848	853	1143	1072
TOTAL ARRESTS	1318	1200	1152	1442	1277

DUI Arrests

2008	2009	2010	2011	2012
216	165	151	175	168

Police Reports

2008	2009	2010	2011	2012
4192	3925	3663	4149	4060

Calls for Service

2008	2009	2010	2011	2012
26,720	24,382	22,324	26,433	24,922

2012 Lafayette Crime Clock



106 Arrests every month

543 Municipal Citations issued every month

68 Calls for Service every day

1.38 Burglaries every week

1.3 Auto Thefts every month

4.7 Reports of Vandalism every week

Motor Vehicle Accidents

	2008	2009	2010	2011	2012
ACCIDENTS	456	526	520	501	486
FATALITIES	1	2	3	0	1

Top Accident Location in 2012: US Hwy 287 & Dillon Road

Citations

	2008	2009	2010	2011	2012
MUNICIPAL	6983	7152	7043	7170	6521
STATE	1302	874	878	1165	1172

The Lafayette Police Department has used Harley-Davidson motorcycles for traffic enforcement since 2003, also conducting escorts for special events and assisting with community events.



The Bicycle Patrol Unit is made up of patrol officers that have completed the appropriate specialized training. Bicycles support normal patrol duties and are utilized primarily in the spring and summer. The unit is especially effective with extra patrol duty in neighborhoods, trails and parks where patrol cars cannot access. The bicycles are low profile and highly maneuverable.

The Critical Accident Reconstruction Team (CART) is responsible for the investigation of serious traffic accidents and fatalities.



Police Emergency Response Times

2008	2009	2010	2011	2012
6:17	6:13	6:17	5:37	5:49

Animal Control

Domestic Animal Calls

2008	2009	2010	2011	2012
640	672	878	1121	1048

Wildlife Calls

2008	2009	2010	2011	2012
72*	208	188	171	267

*Partial year data

Advancements in Technology

CrimeReports.com – crime mapping
CopLink – information sharing tool amongst law enforcement jurisdictions for improved investigations
License Plate Reader – license plate scanning tool
Brazos – electronic citations
Lexipol – online policy manual development system

The Detective Unit is organized into the following areas of criminal investigation: Persons Crimes, Property Crimes, Financial Crimes, Juvenile Crimes and Special Investigations.

Detectives also serve on various collateral units such as Hostage Negotiation team, SWAT & Drug Task Force (Boulder County teams) and gang intelligence, major crime scene investigations, liquor enforcement and sex offender registration.



Lafayette joined the brand new in 2012 Longmont/Boulder County Firearms Training Center.

Community Oriented Policing and Problem Solving (COPPS)

The Lafayette Police Department has a focus on community-oriented policing and problem-solving. This focus coordinates effective initiatives from supervisors, detectives, patrol officers and animal control. It involves additional foot patrols, security assessments, summer impact teams and park quality-enhancement projects, just to name a few.

COPPS Project Data				
	Number of Projects	Citizen Contacts	Summonses Issues	Warnings Issued
2012	11	1394	266	50
2011	17	1103	199	25
2010	15	1630	175	185
2009	17	2305	284	217
2008	19	1612	213	165

2012 Police Department Community Involvement Programs & Events

- Oatmeal Festival - Crime Prevention Booth
- Lunch with Seniors
- Neighborhood Watch Programs
- Coffee with a Cop
- Community Food Drive
- Crime Prevention through Environmental Design – Business Visits
- Youth Mentoring/Apprenticeship Programs
- Drug Take Back / Shred-A-Thon
- Police Fish with Kids
- Peach Festival – Crime Prevention Booth
- National Night Out
- Citizens’ Police Academy
- Flatirons Fall Festival
- Santa Cop

