

PRELIMINARY PLAT
40 NORTH SUBDIVISION PLAT
 A PART OF THE SOUTHEAST QUARTER OF SECTION 33 AND A PART OF THE SOUTHWEST QUARTER OF SECTION 34,
 TOWNSHIP 1 NORTH, RANGE 60 WEST OF THE SIXTH PRINCIPAL MERIDIAN,
 CITY OF LAFAYETTE, COUNTY OF BOULDER, STATE OF COLORADO.
EXTERIOR BOUNDARY REFERENCE SHEET

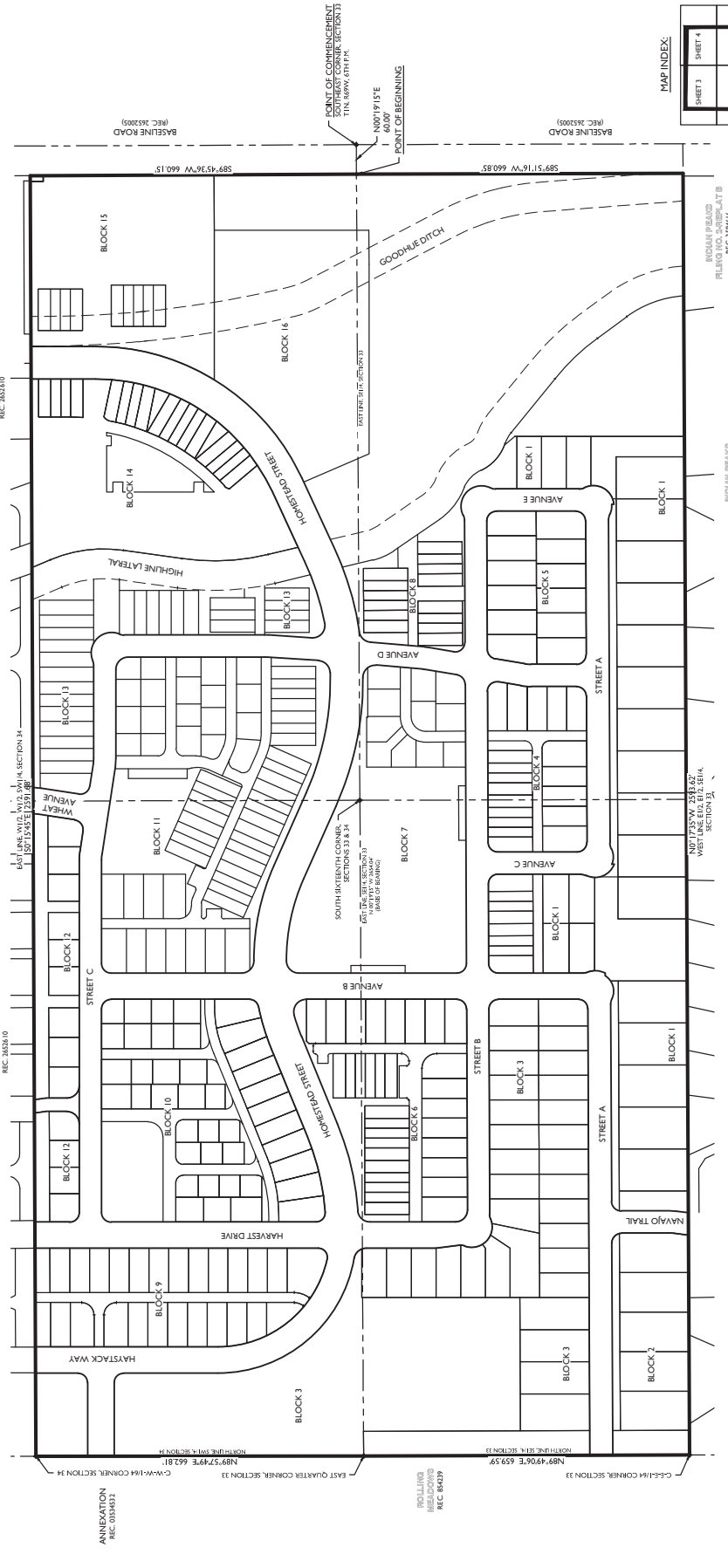
40 NORTH SUBDIVISION PLAT
 SEC. 33 & 34, T1N, R69W, 6TH PM.
 BOULDER COUNTY, COLORADO

NO.	DESCRIPTION	DATE	BY

REVISIONS

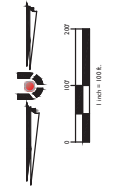
DATE BY

JOB NO. 16-095
 SHEET 2 of 14



MAP INDEX

SHEET 3	SHEET 4
SHEET 5	SHEET 6
SHEET 7	SHEET 8
SHEET 9	SHEET 10
SHEET 11	SHEET 12



LAFAYETTE PARISH -
 A PART OF TRACTS 3, 4 AND 5,
 LAFAYETTE PARISH DIST. - BEING NO. 2
 REC. 129116

LAFAYETTE PARISH -
 A PART OF TRACTS 3, 4 AND 5,
 LAFAYETTE PARISH DIST. - BEING NO. 1
 REC. 262149

LAFAYETTE PARISH -
 A PART OF TRACTS 3, 4 AND 5,
 LAFAYETTE PARISH DIST. - BEING NO. 3
 REC. 229116

LAFAYETTE PARISH -
 A PART OF TRACTS 3, 4 AND 5,
 LAFAYETTE PARISH DIST. - BEING NO. 2
 REC. 129116

ANNEXATION
 REC. 035432

EAST QUARTER CORNER, SECTION 33
 N89°57'47"E 662.81'
 C-W/4th CORNER, SECTION 33

SOUTH SIXTEENTH CORNER
 SECTIONS 33 & 34
 DIST. 174.14' (SECTION 34)
 (PART OF MAINLINE)

POINT OF COMMENCEMENT
 SOUTHEAST CORNER SECTION 33
 T1N, R69W, 6TH PM

ROLLING MEADOWS
 REC. 87427

INDIAN PRIBAGO
 PILLING NO. 8
 REC. 159974

INDIAN PRIBAGO
 PILLING NO. 8
 REC. 159974

INDIAN PRIBAGO
 PILLING NO. 8
 REC. 159974