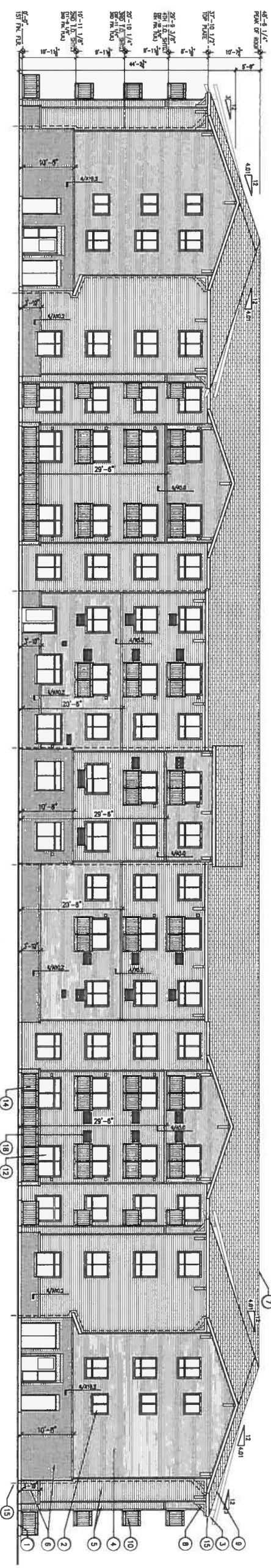


1 WEST ELEVATION
 SCALE 3/32" = 1'-0"



2 EAST ELEVATION
 SCALE 3/32" = 1'-0"

Exterior Feature	Material	Antique/Manufacturer	Color
Roof	Asphaltic Composition Shingle	TAMCO HERITAGE	Weathered Wood
Roof Gutters & Downspouts	Sheet Metal	Custom	White
Roof Fascia	Wood	2 x 8 Smart Trim	SW 7005 Extra White
Belly Band	Wood	3-1/2" x 5/4" Smart Trim	SW 7005 Extra White
Roof Ventilated Soffit	Vinyl	Ply Gem	White
Roof Corbel/Decorative Gable Bracket	Wood or PVC	Custom	SW 7005 Extra White
Windows	Vinyl	ECO Windows	White
Lap Siding 1	Double 4" Vinyl Woodgrain	Ply Gem Solar Defense	Neopart Bay
Lap Siding 2	Double 4" Vinyl Woodgrain	Ply Gem Solar Defense	White
Lap Siding 3	Double 5" Vinyl Woodgrain	Ply Gem Solar Defense	Harbor Gray
Corner Trim & Window Trim at Siding Locations	Vinyl/Metal	Ply Gem	Weather
Thin-Brick Masonry Cadding	Cultured Stone	Zemem Stone	Match Adjacent Siding Color
Window Sills @ Stone Locations	Vinyl	Zemem Stone	Redonda Gray
Utility Vents, Gable Vents & Mounting Blocks	Metal	Ply Gem	Match Adjacent Siding Color
Exterior Doors (excluding entry)	Steel	Custom	SW 7005 Extra White (exterior side only)
Decks & Metal Railings	Aluminum		Black
Aluminum Storefront			White

KEYNOTES

1. FRESH GROUT. SLOPE AWAY FROM BUILDING AT 2% MIN.
2. 1/2" THICK POLYURETHANE INSULATION. SEE DETAIL.
3. 2X8 PAINTED BRUSH SLAT TRIM OR EQUAL.
4. 4" LAPPED VINYL SIDING.
5. 5" LAPPED VINYL SIDING.
6. TRIM BRICK VENEER. SEE ROOF PLAN.
7. DOWNSPOUTS. ROOF OVERLAP. SEE DETAIL 4/1/5.2.
8. DOWNSPOUTS. ROOF OVERLAP. SEE DETAIL 4/1/5.3.
9. ARCHITECTURAL LAMINATED FIBERGLASS ROOF SHINGLES.
10. METAL FLASHING/DECK. SEE 2/1/16.1.
11. ALUMINUM STONE FRONT ENTRY SYSTEM.
12. VINYL FINISHED SLIDING GLASS DOOR.
13. USE PREPARED VINYL.
14. USE PREPARED COATED METAL FLASHING. COSE AND GROUT INSULATION.
15. PREPARED METAL GUTTER AND DOWNSPOUT. THE DOWNSPOUT TO STORM DRAIN SYSTEM AT GROUND. SEE CIVIL TIE-IN DRAWING.
16. BUILDING ADDRESS NUMBER. MAXIMUM 8" TALL, 3/4" BRUSH STROKE. COLOR TO MATCH POSITIVE CONTRAST WITH BACKGROUND.
17. WINDOW SILL. SHIP TO MATCH TO BATH TRIM DOOR AND THE BATH ROOM DOOR.
18. HVAC GRILLE. COLOR TO MATCH ADJACENT SIDING MATERIAL.
19. RASSED PANEL. DETAIL. SEE 3/1/5.A.

GENERAL NOTES

- A. ALL NOTES ON ELEVATIONS ARE TYPICAL AND APPLY TO ALL ELEVATIONS.
- B. ALL FINISH MATERIALS TO BE INSTALLED PER MANUFACTURER'S SPECIFICATIONS. 2015 IRC REQUIREMENTS AND TEST GENERALLY ACCEPTED CONSTRUCTION PRACTICES.
- C. VERIFY ALL FINISH MATERIAL, SELECTION AND COLORS WITH OWNER PRIOR TO ORDERING AND INSTALLATION.
- D. ALL FINISH PROFILES AND FINISHMENTS TO MATCH ADJACENT SIDING COLOR.
- E. TRIMS & SINKS TRANSITIONS TO MATCH ADJACENT SIDING COLOR. INVESTIGATIONS TO MATCH COLOR ABOVE.
- F. SINK TRANSITIONS TO REMOVE 1/2" x 1/2" MAX. SQUARE OF ALL FINISH MATERIAL TO BE SCHEDULED FOR REPAIR.
- G. ALL UNITS TO BE SCHEDULED OR BELOW GRADE. COORDINATE WITH MECHANICAL DRAWINGS AS REQUIRED.
- H. SINKING STILES TO MATCH ADJACENT ADJACENT CORNERS WHERE NOT SHOWN (UNLESS NOTED OTHERWISE). FINISHES AND OUTLETS MOUNTED IN UNIFORM AND VINYL SIDING. REQUEST CUSTOM COLOR FROM GENERAL CONTRACTOR.

PROJECT
TRADITIONS AT LAFAYETTE
 SOUTH PUBLIC ROAD AND SOUTH LAFAYETTE DR. LAFAYETTE, COLORADO



This document is the property of THE ARCHITECTS OFFICE, P.L.L.C. and is not to be duplicated without written authorization.
 © THE ARCHITECTS OFFICE, P.L.L.C.
 FILE
 DATE
 8-22-18
 17-214.A5.0
 DRAWN BY
 JOHN PRICE

REVISIONS