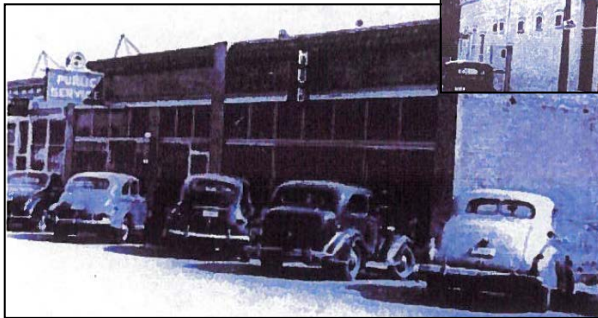
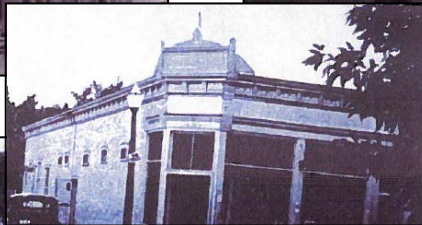


Historic Property at 418–424 East Simpson Street



Property Description

- Year Built:** 1900
- Second story of original pre-1900 brick building removed after fire
 - Current brick building reconstructed as single story in 1900
- Historical Name:** Clifford J. Alderson Building/Powell Mortuary/Post Office
- originally one building then divided into three before 1948
 - held retail stores, Powell Mortuary, post office
- Eligible for:** Lafayette Register of Historic Places; could contribute to National or State Register Historic District
- one of the original buildings in Lafayette's commercial district
 - provided services for Lafayette's miners
 - exemplifies early 20th century commercial building architecture

Development Opportunities

Defining Characteristics (pre-1900 period):

- Large storefront/street-side windows
- Corner entrance
- Brick façade and elevations
- Arched windows and doors
- Brick details along parapet
- Horizontal orientation
- Small setback from East Simpson Street

Defining Characteristics (1900–1950 period):

- Large storefront/street-side windows with small windows over large ones
- Corner entrance
- Brick façade and elevations
- Parapet with corbels
- Horizontal orientation
- Small setback from East Simpson Street
- Store signs perpendicular to building facade

Development Opportunities:

- Remove stucco to expose brick; if too badly deteriorated, re-face with brick
- Re-open hidden windows and doors or replace with identically sized and styled units
- Re-introduce large windows across upper facade
- Reconstruct entrance and parapet based on historic photos
- Demolish building and reconstruct original two-story brick building as exactly as possible based on historic photos and descriptions
- Do not introduce vertical architectural elements aside from a second story
- Use historic material (i.e., brick) and limit the total amount of introduced material (e.g., stucco, wood clapboard, metal, concrete) on elevations to less than 20%

Development Benefits

- If listed on the Lafayette Register of Historic Places, property becomes eligible for 20% State and 20% Federal tax credits for appropriate renovation, rehabilitation, and/or reconstruction